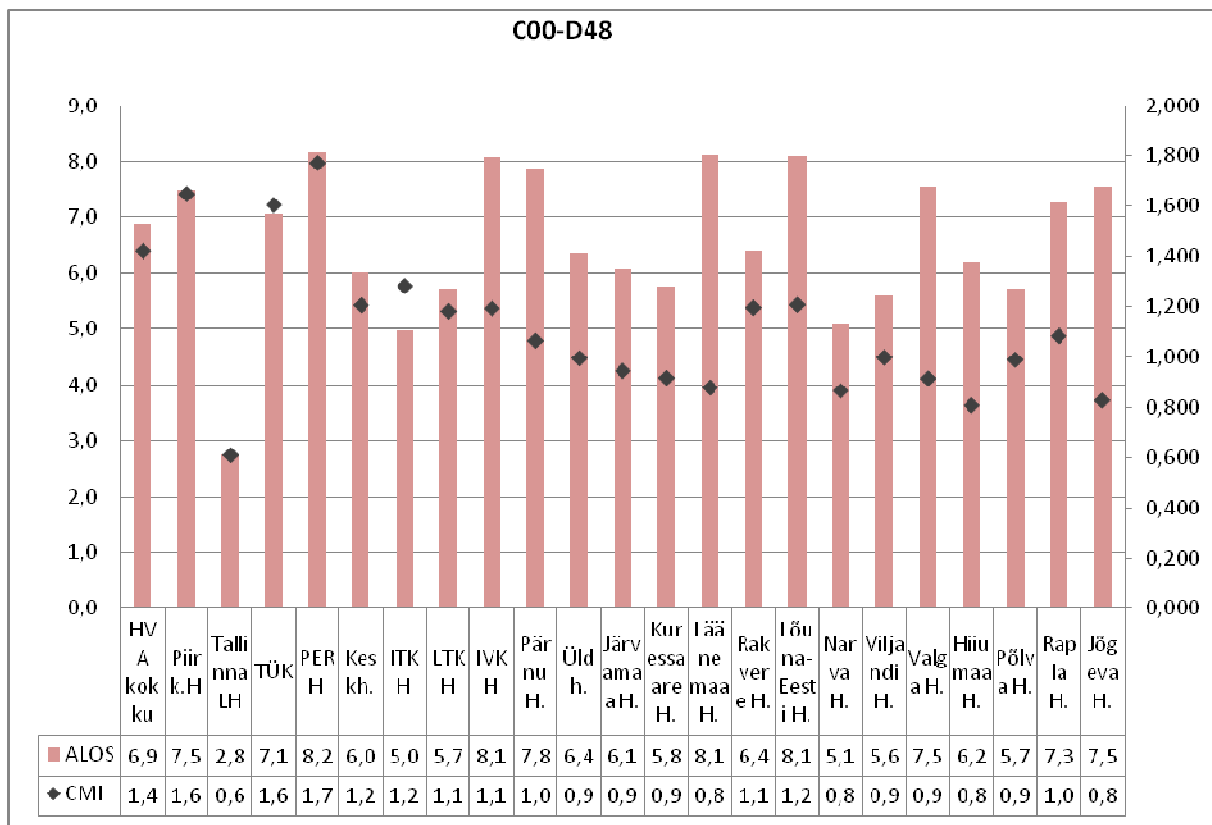
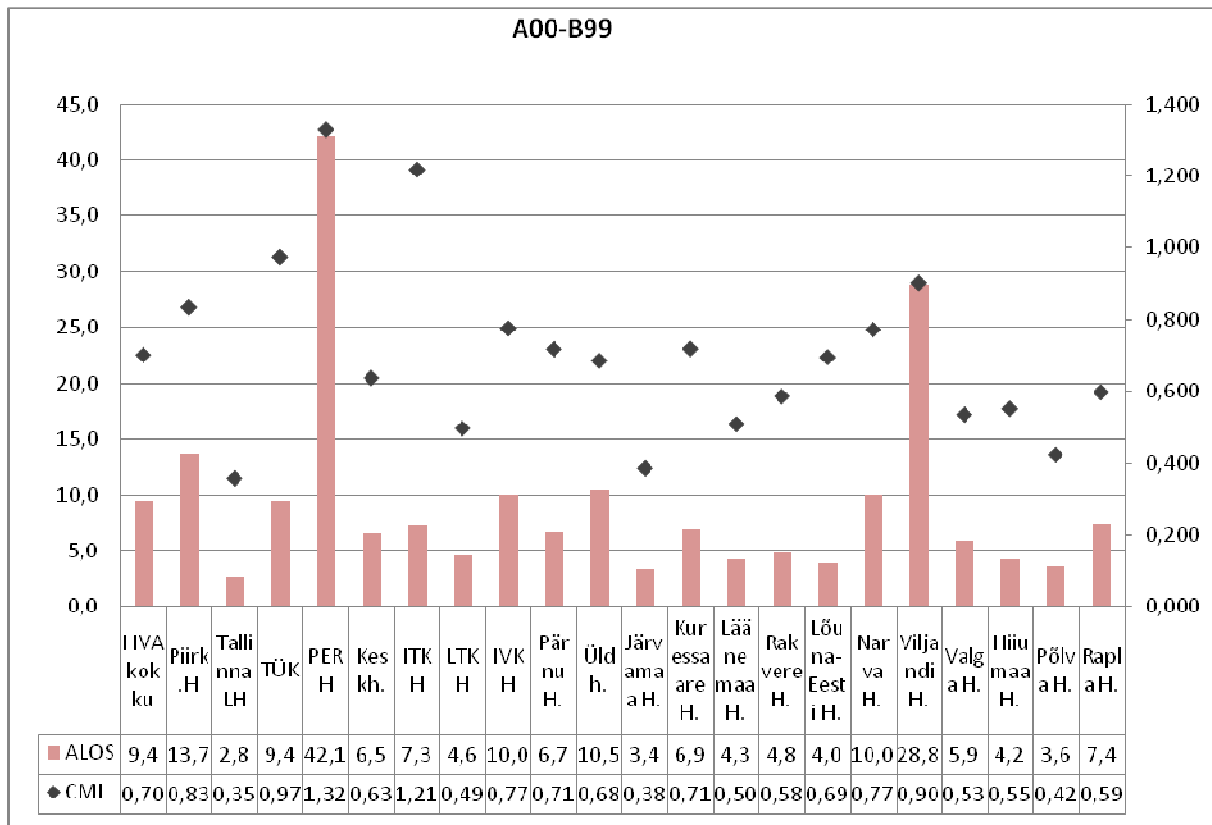
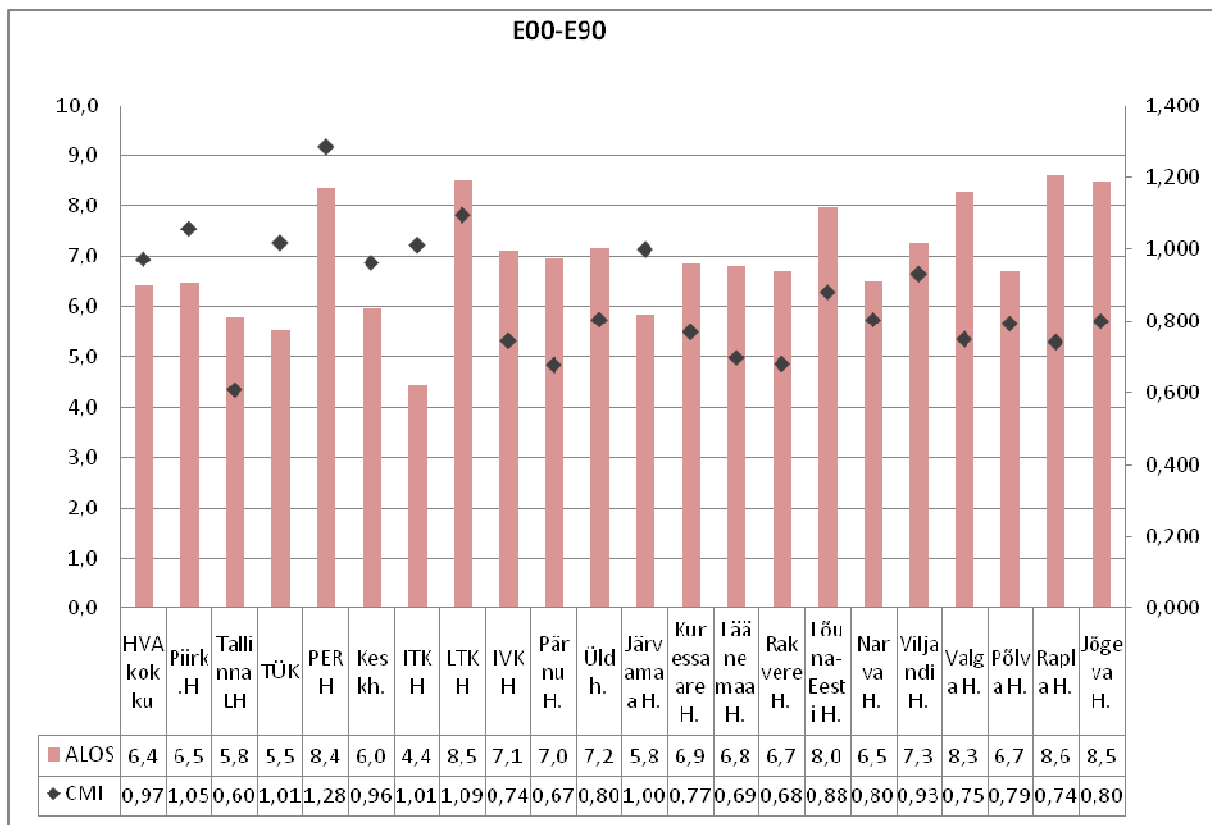
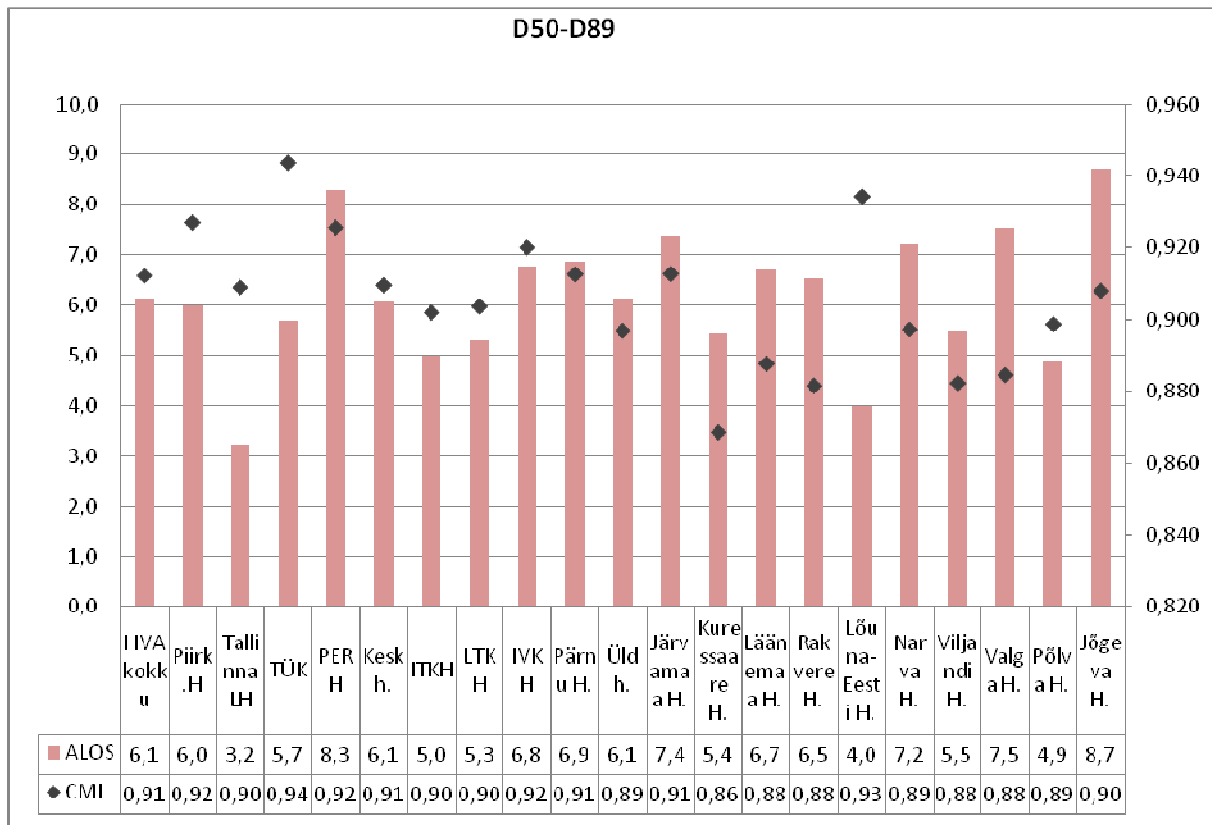
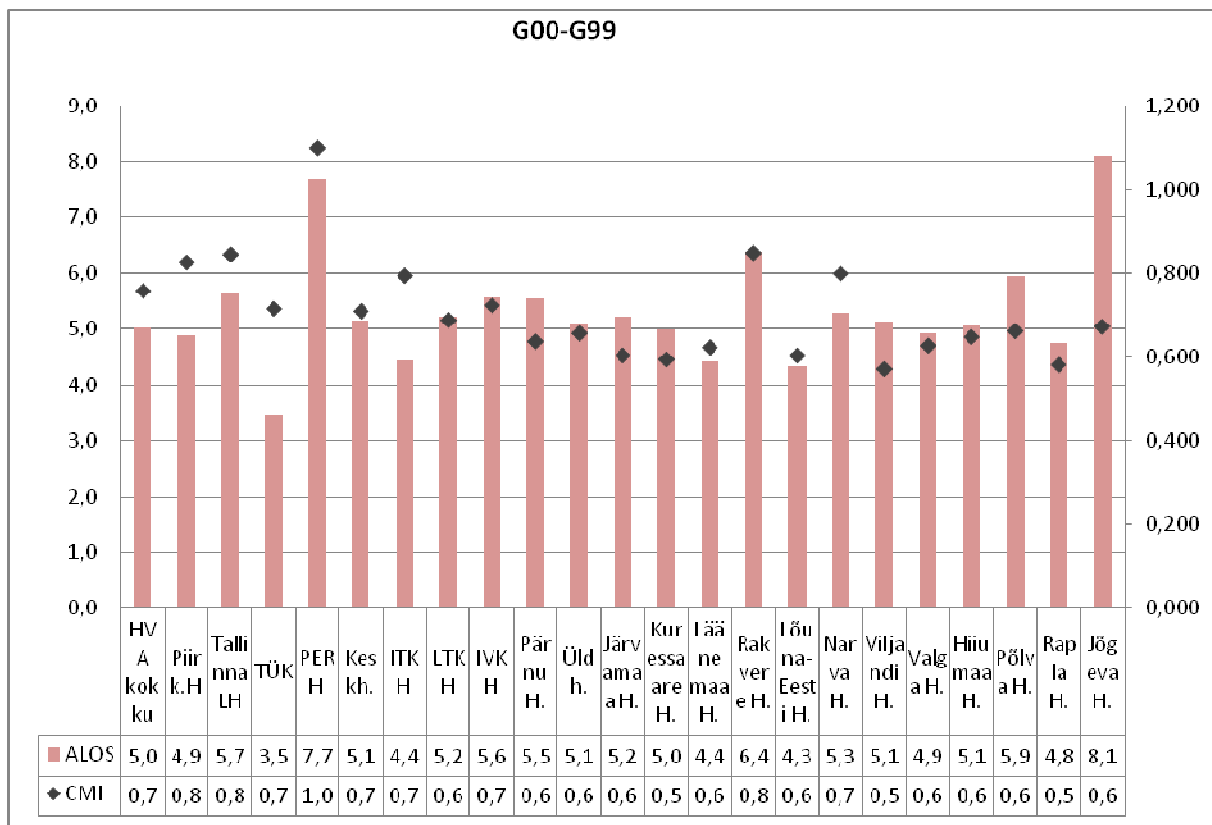
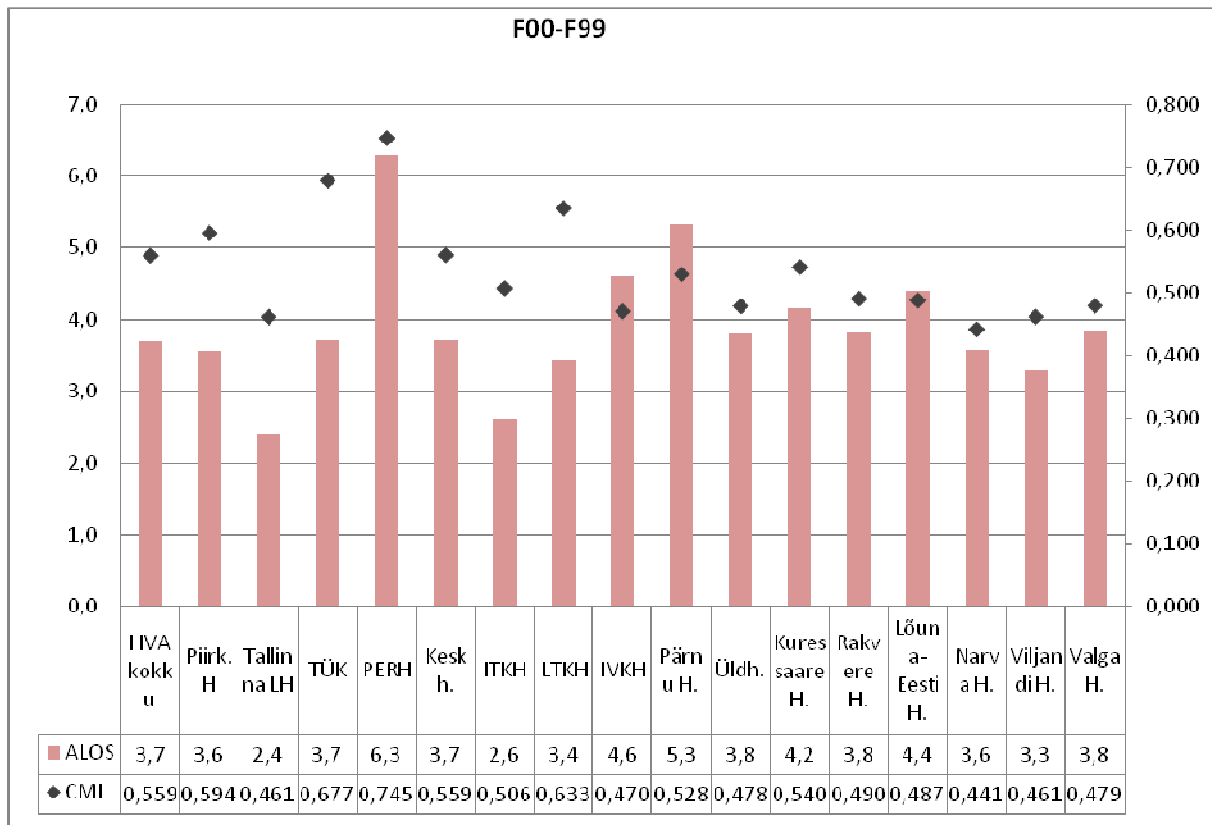
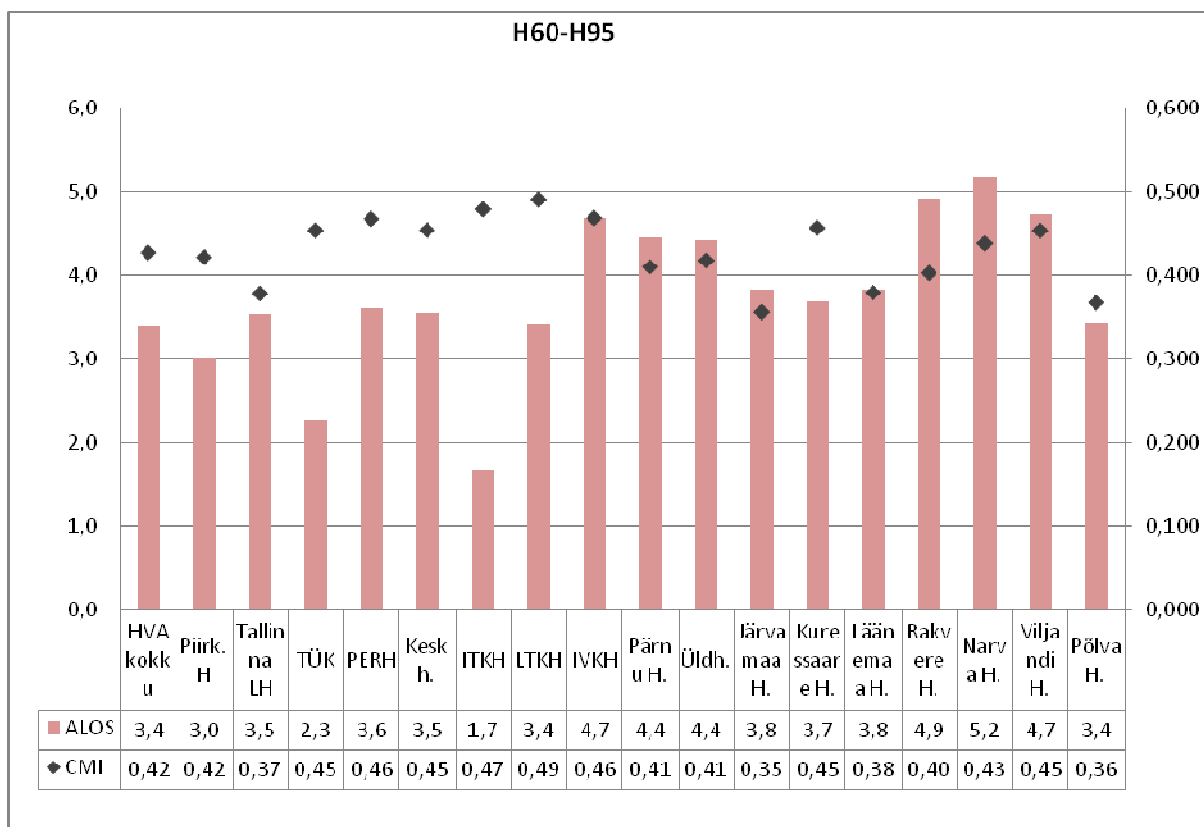
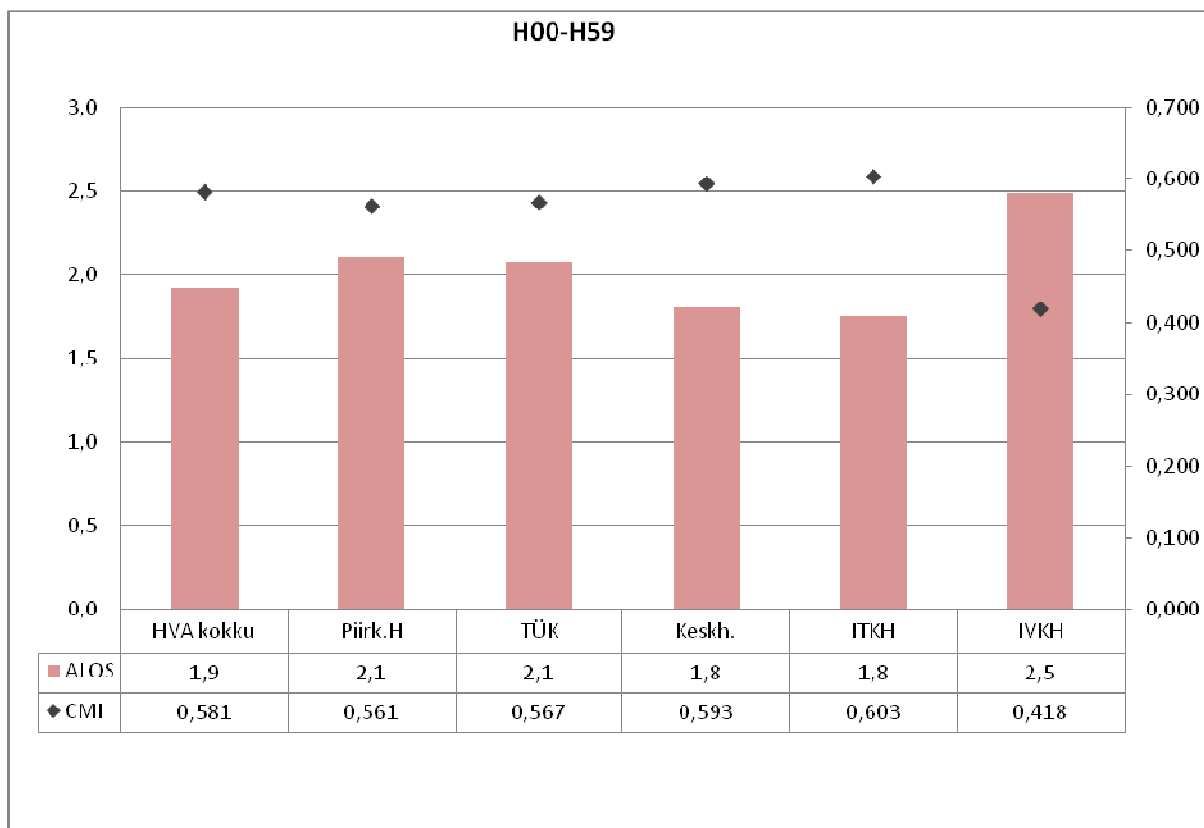


ALOS ja CMI diagnoositi 2009

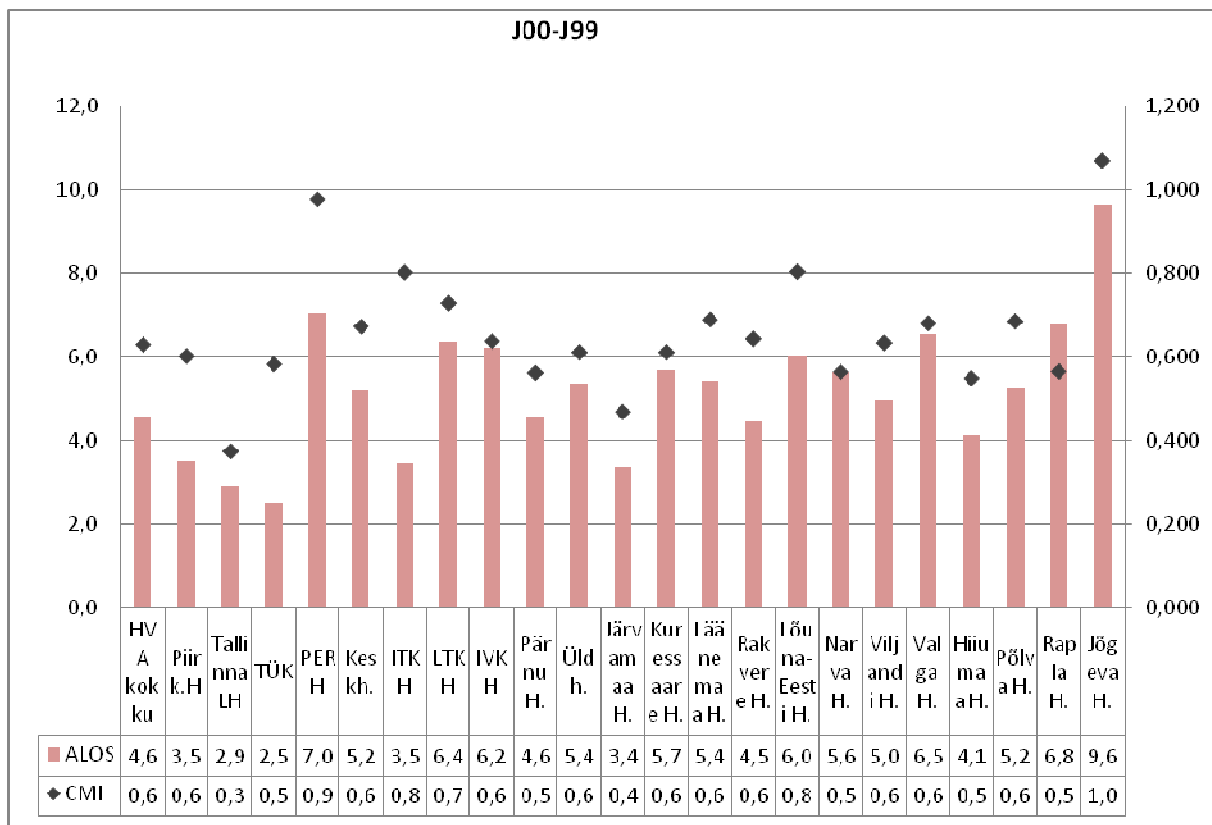
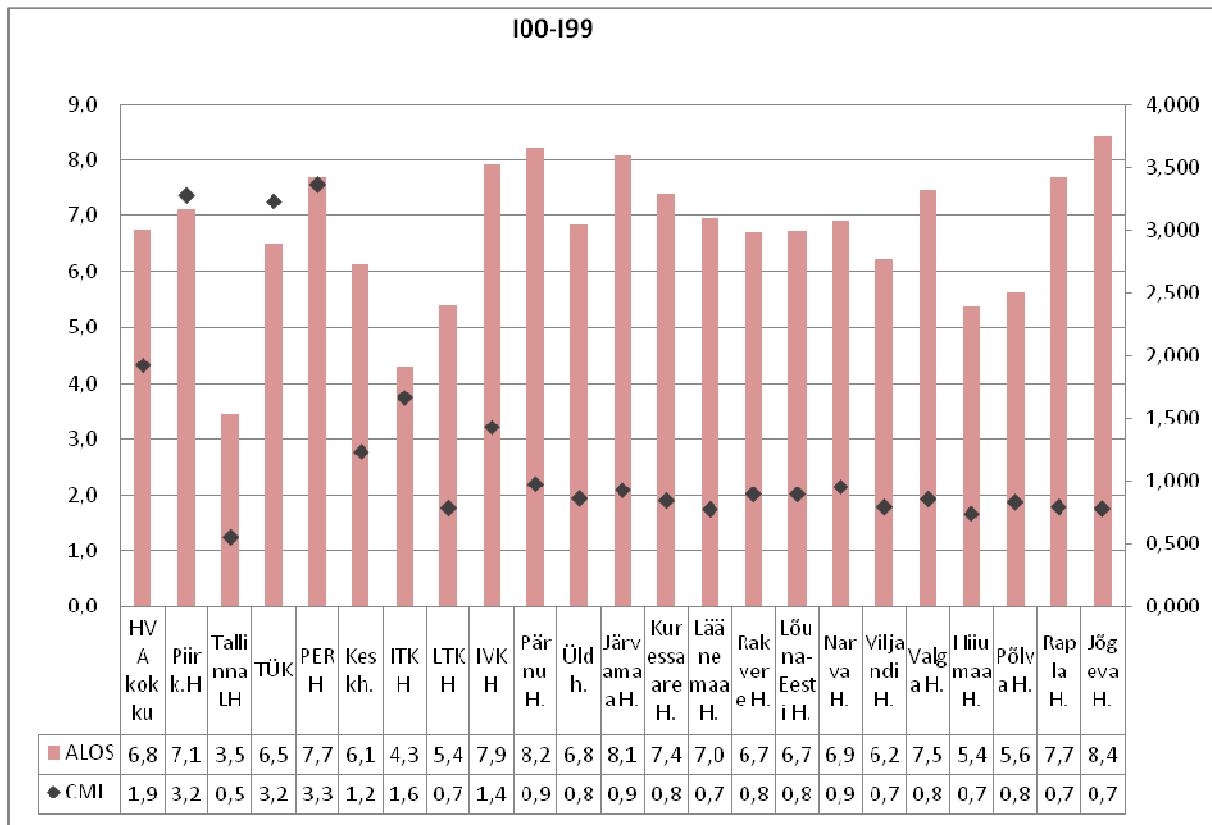


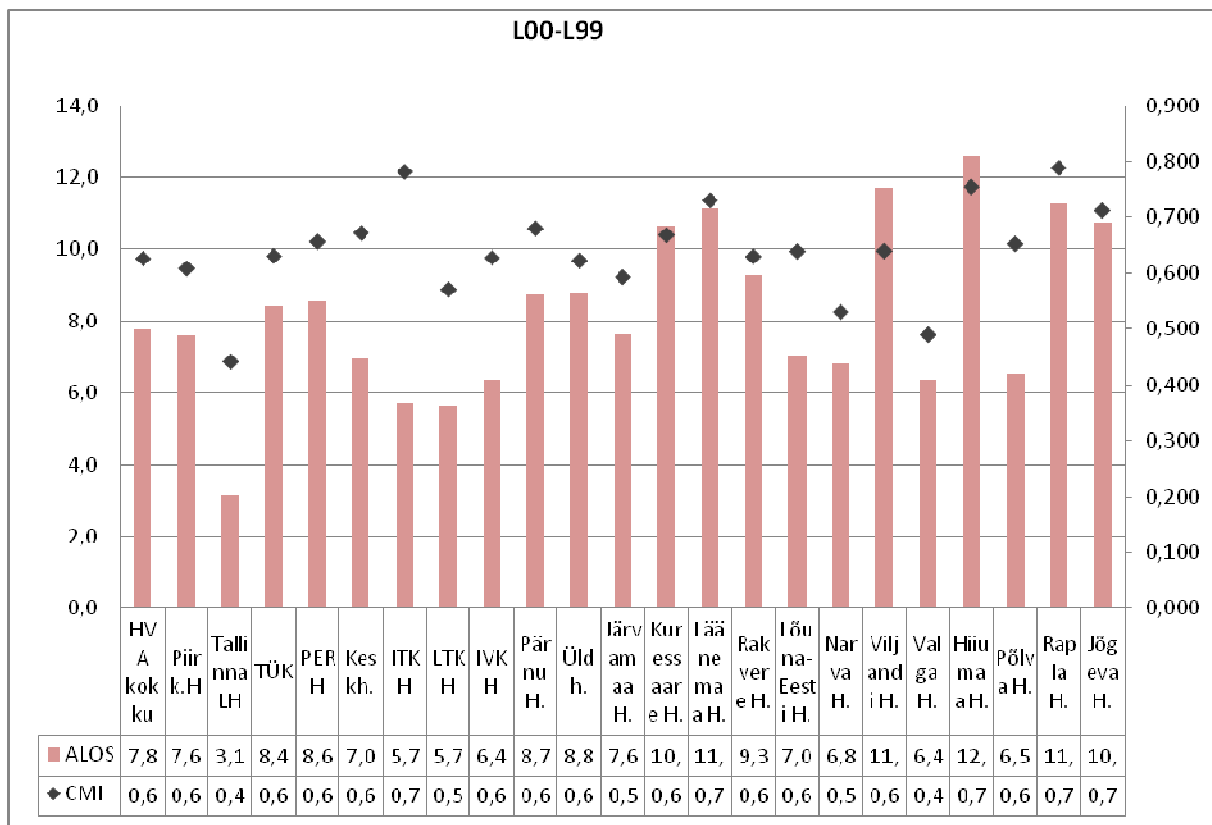
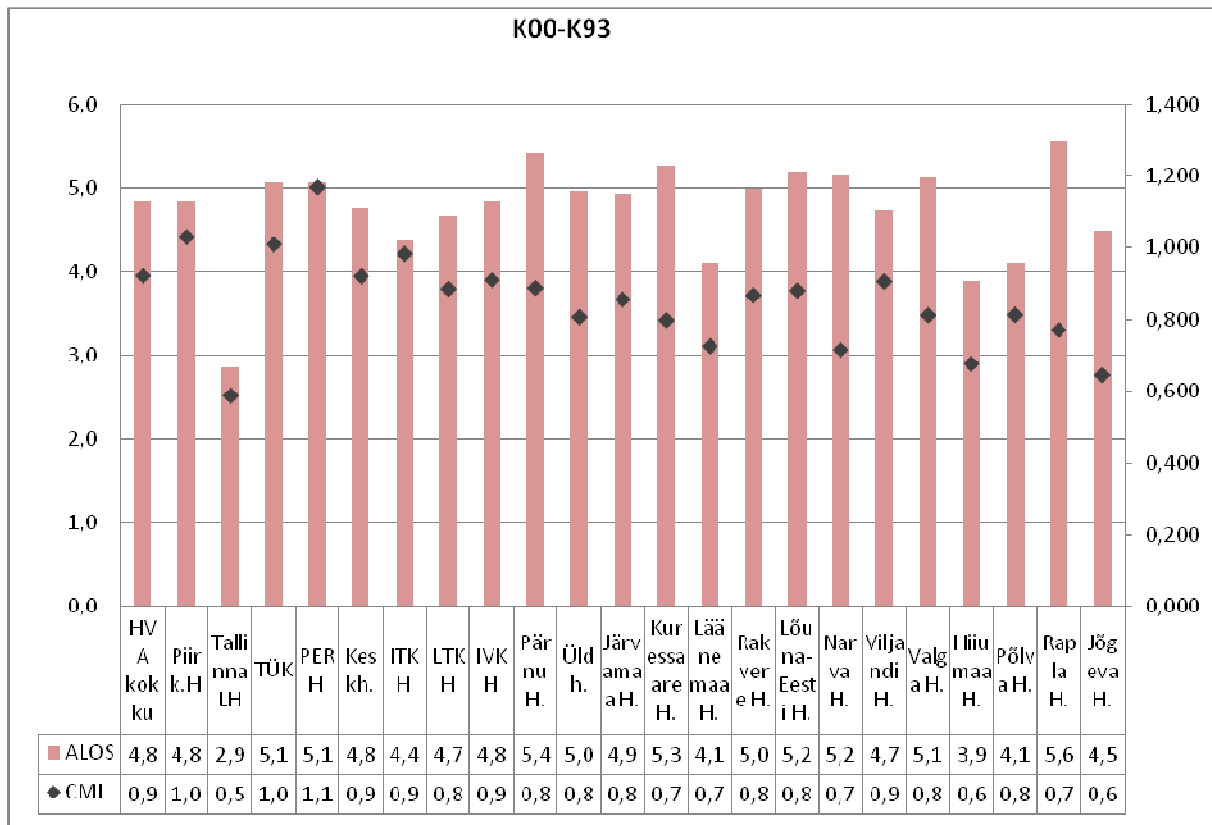




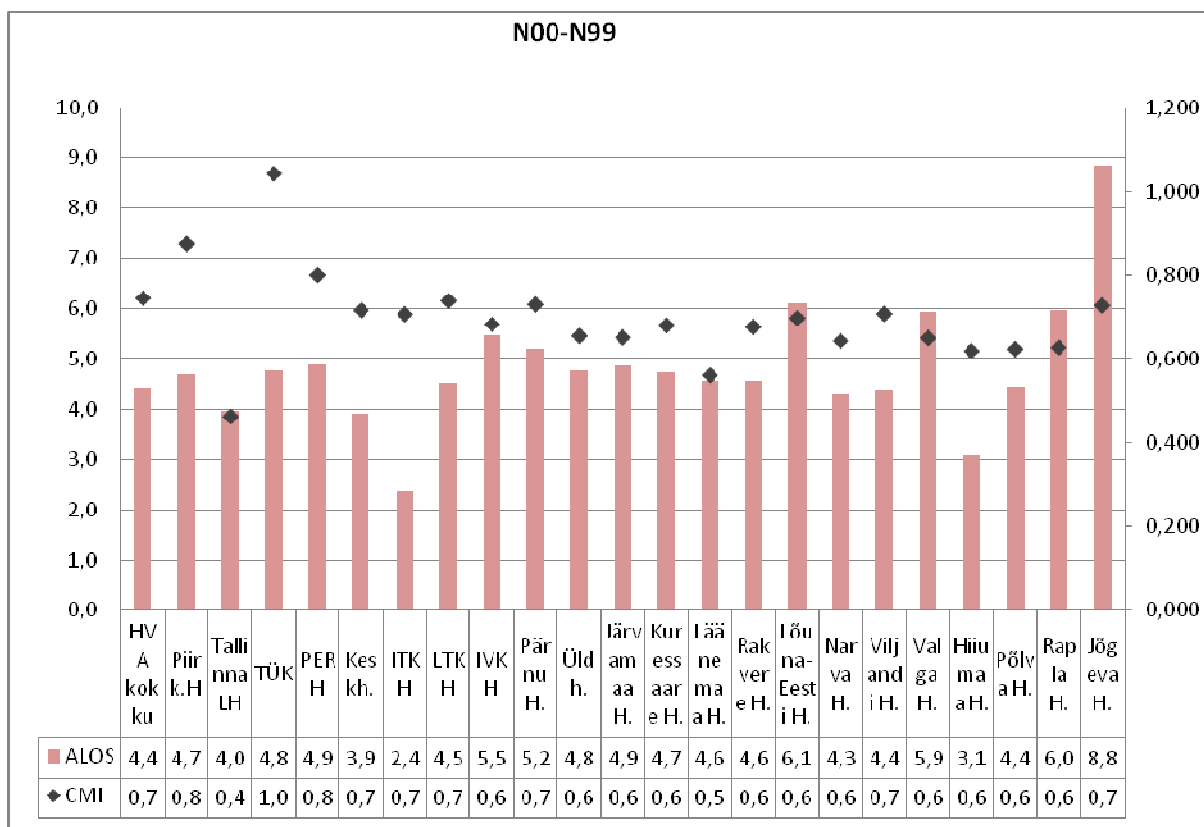
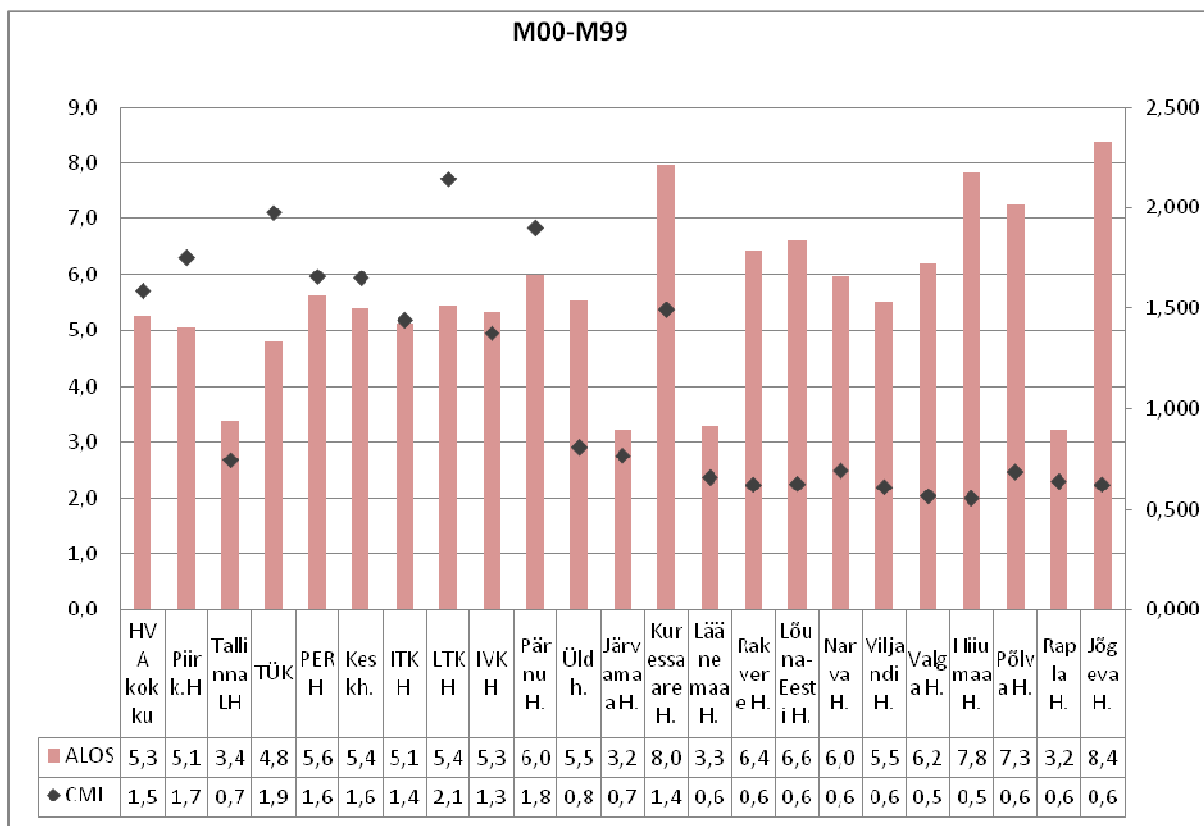


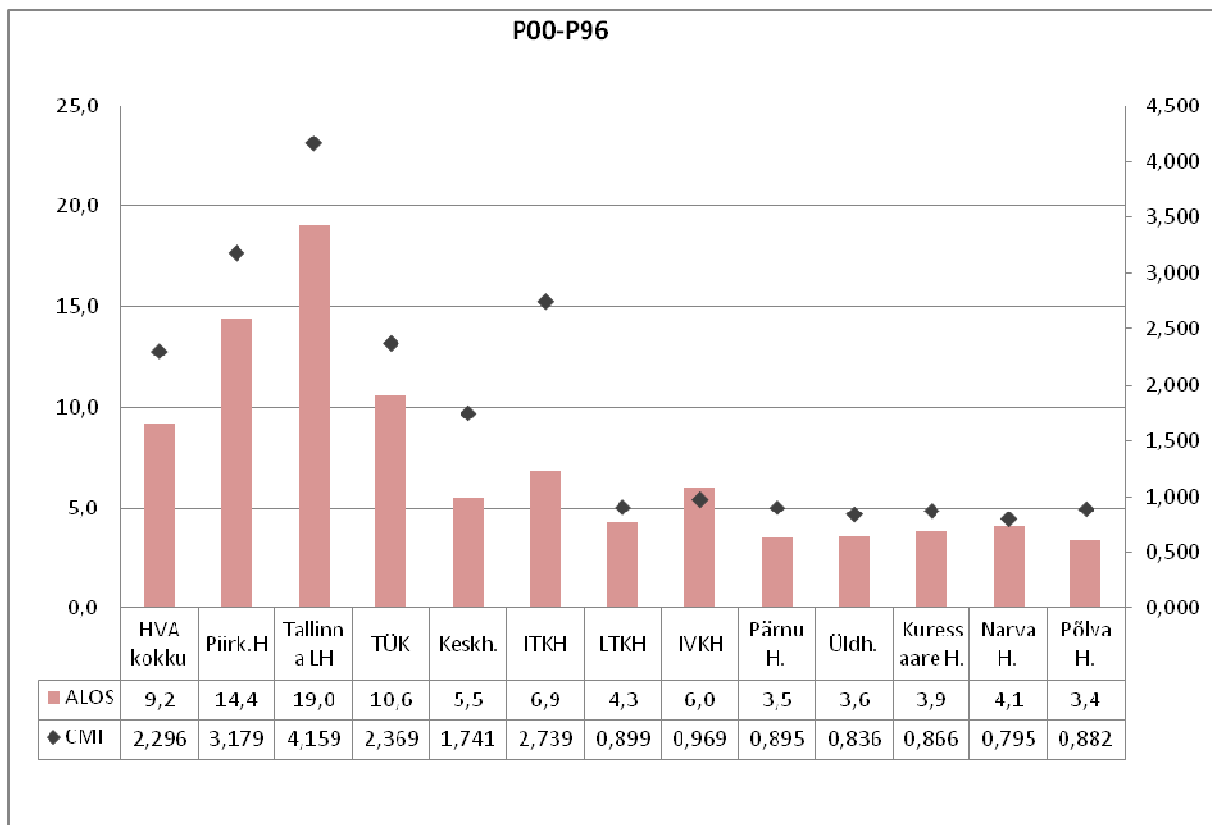
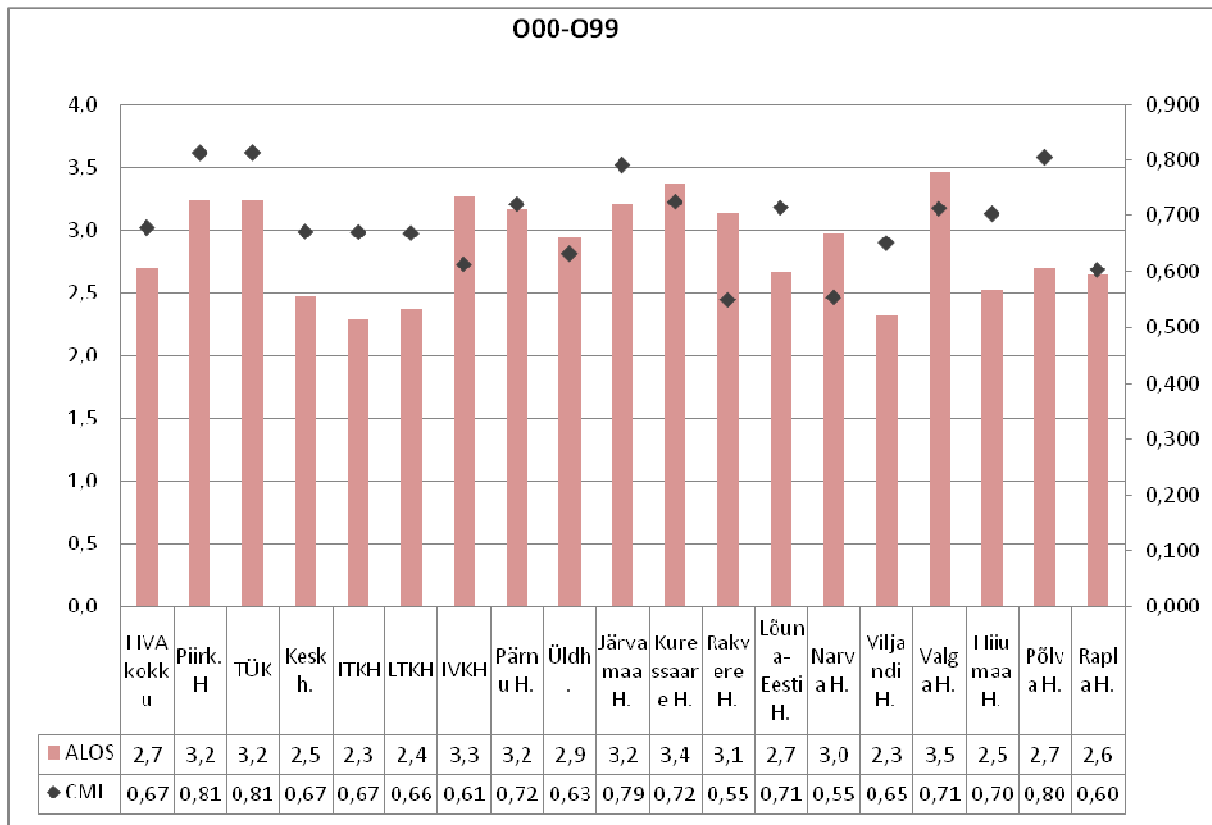
ALOS ja CMI diagnoositi 2009



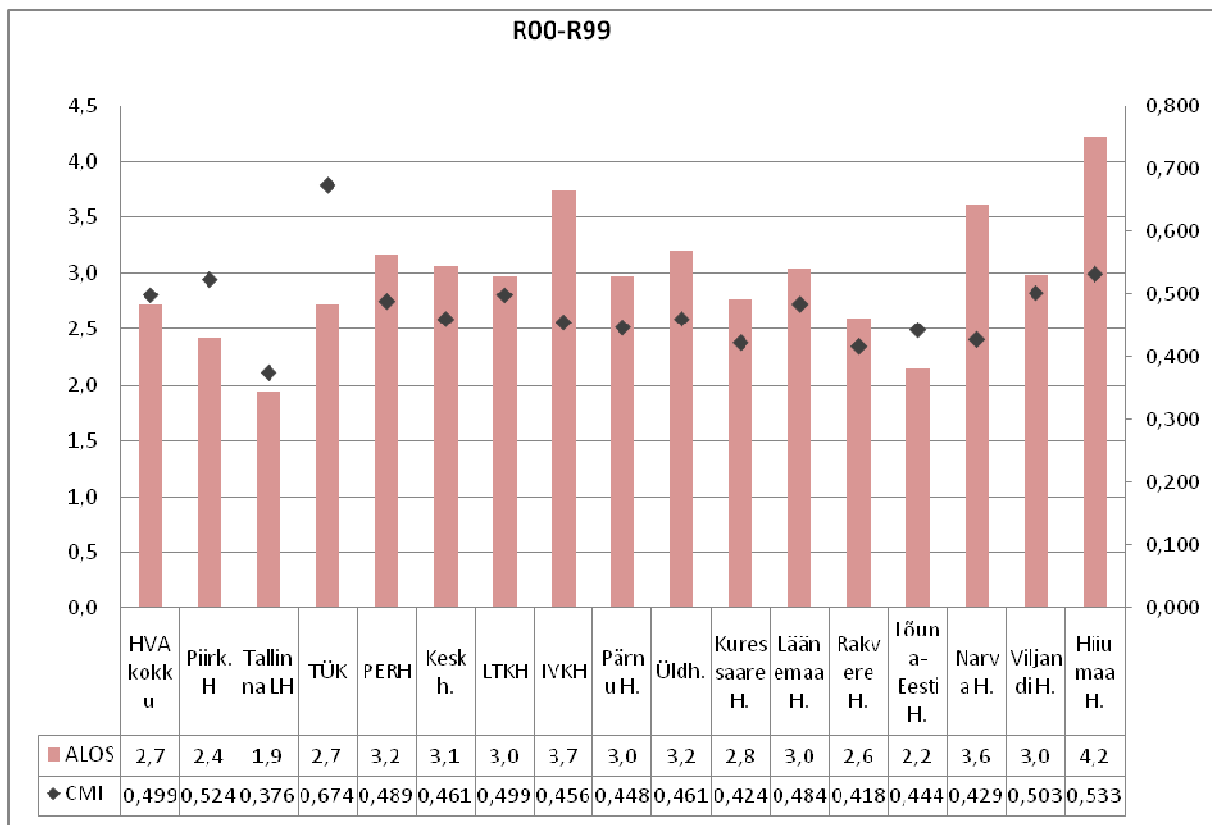
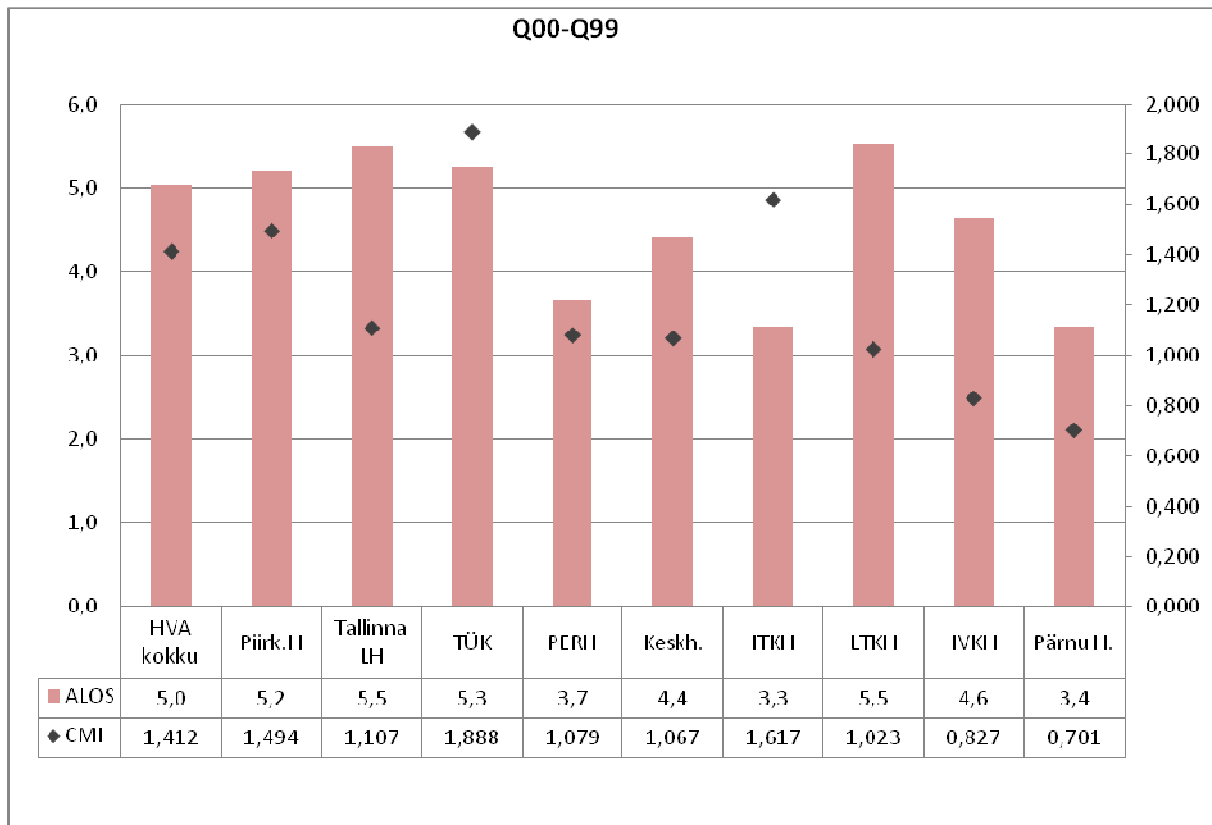


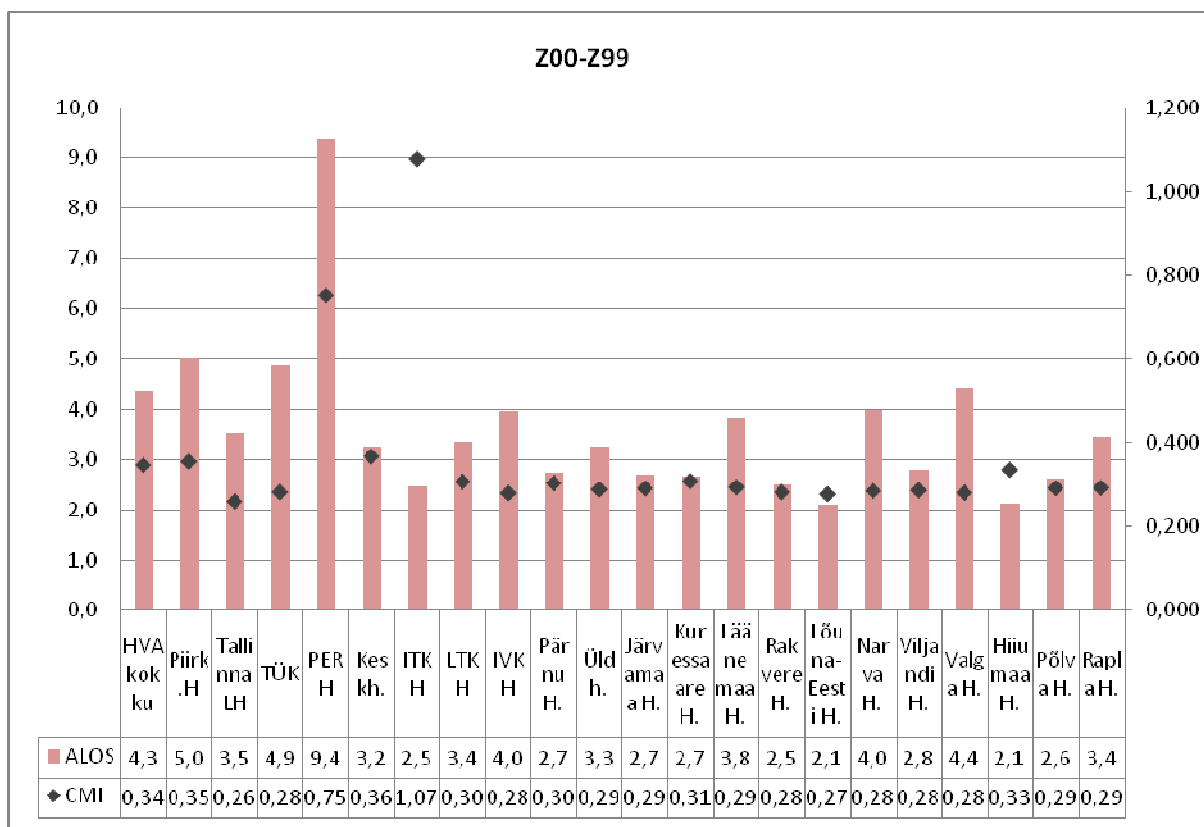
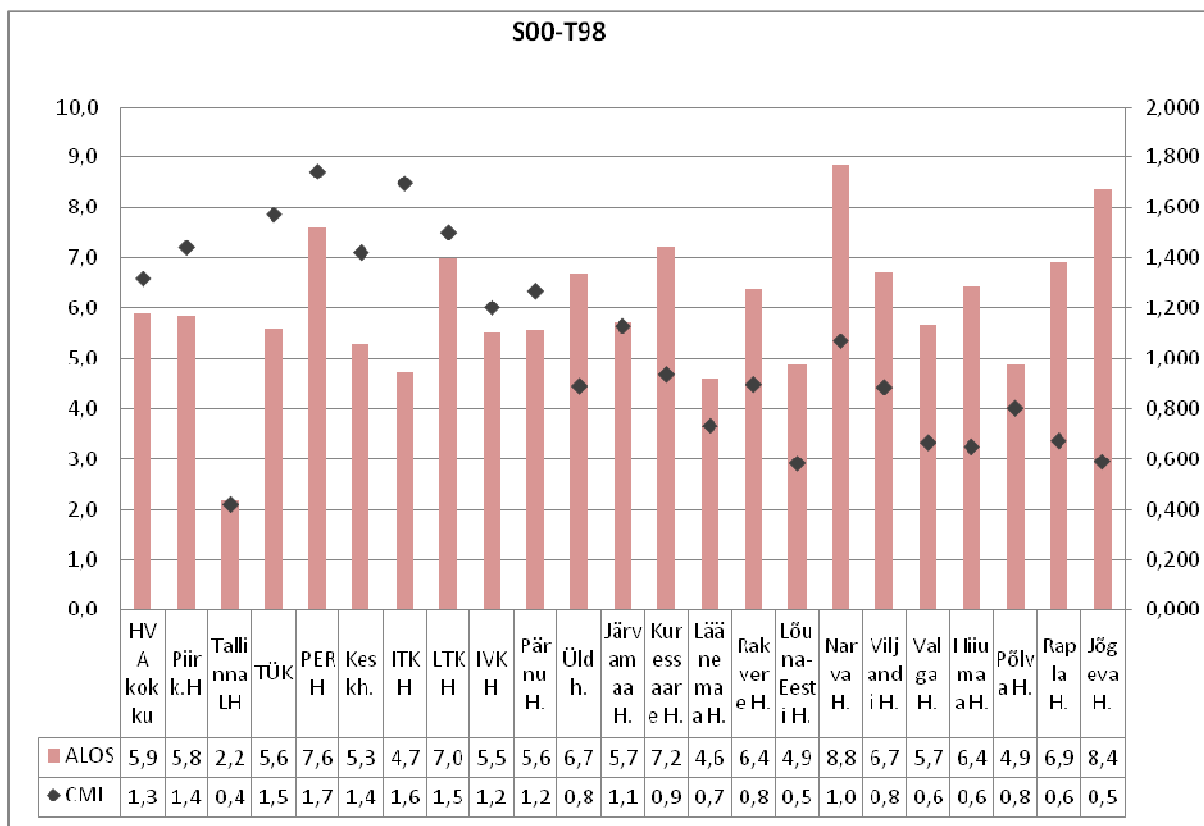
ALOS ja CMI diagnoositi 2009





ALOS ja CMI diagnoositi 2009





Dgn kood	Dgn nimi
A00-B99	Nakkus- ja parasiithaigused
C00-D48	Vähktõbi
D50-D89	Vere- ja vereloomeelundite ning immuunmehh-ga seotud haigusseisundid
E00-E90	Sisesekretsiooni-, toitumis- ja ainevahe
F00-F99	Psüühika- ja käitumishäired
G00-G99	Närvisüsteemihaigused
H00-H59	Silma- ja silmamanuste haigused
H60-H95	Kõrva- ja nibujätkehaigused
I00-I99	Vereringeelundite haigused
J00-J99	Hingamiselundite haigused
K00-K93	Seedeelundite haigused
L00-L99	Naha- ja nahaaluskoe haigused
M00-M99	Lihaskonna ja sidekoehaigused
N00-N99	Kuse-suguelundite haigused
O00-O99	Rasedus, sünnitus ja sünnitusjärgne peri
P00-P96	Sünniperioodis tekkivad teatavad seisund
Q00-Q99	Kaasasündinud väärarendid
R00-R99	Mujal klassifitseerimata sümptomid
S00-T98	Vigastused, mürgistused jm välispõhjuste
Z00-Z99	Tervise seisundit mõjutavad tegurid ja k